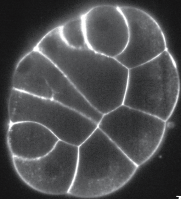


Input Image



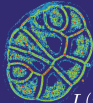
$$I(\mathbf{y})$$

Gradient Magnitude



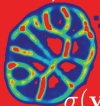
$$|\nabla I(\mathbf{y})|$$

Local Resolution Estimate



$$L(\mathbf{y})$$

Local Intensity Scale



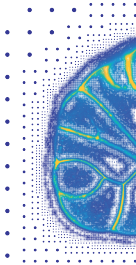
$$\sigma(\mathbf{y})$$

Resolution Function



$$R^*(\mathbf{y})$$

Reconstructed Image



$$\hat{I}(\mathbf{y})$$